

9. WHEELER, W. M. (1910). *Ants, their Structure, Development, and Behavior*, pp. 357-360, 2 figs.

EXPLANATION OF PLATES II AND III.

Fig. 1. Larva of *Lycena piasus*, dorsal view, showing position of external organs. ( $\times 15$ .)

Fig. 2. Posterior part of same, lateral view, showing appearance of organs when protruded.

Fig. 3. Section through retracted evaginable organ; from vertical longitudinal sections of larva. (Camera lucida drawing,  $\times 320$ .)

Fig. 4. A single seta of the evaginable organ, and its cell.

Fig. 5. Distal attachment of retractor muscle of evaginable organ to the body wall.

Fig. 6. Cross section of dorsal portion of larva through two of the glands; external opening not shown. (Camera lucida drawing,  $\times 80$ .)

Fig. 7. Central portion of same, more enlarged. ( $\times 220$ .)

Fig. 8. Section through opening of 10th segment, and sac, the latter everted; from vertical longitudinal sections of larva. (Camera lucida drawing,  $\times 120$ .)

Fig. 9. Dorsal view of glands, the skin being removed except around the opening; from dissection. (Camera lucida drawing,  $\times 90$ .)

Fig. 10. Ventral view of glands; from dissection. (Camera lucida drawing,  $\times 90$ .)

*b.m.*, basement membrane; *cut.*, cuticula; *d.v.*, dorsal vessel; *e.t.*, evaginable organs; *f.b.*, fat body; *gl.*, gland; *h.*, hairs about opening of sac; *hyp.*, hypodermis; *int.*, intima; *l.*, lumen of sac; *l.m.*, longitudinal muscles; *o.*, opening of sac; *p.*, sac protruded; *r.m.*, retractor muscle; *s.*, setæ; *spir.*, spiracles; *t.h.*, tactile hairs.

VENATIONAL VARIATION IN CLADURA  
(TIPULIDÆ DIPTERA).<sup>1</sup>

BY C. P. ALEXANDER AND M. D. LEONARD,

ITHACA, N. Y.

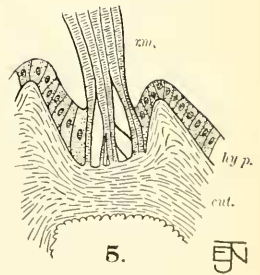
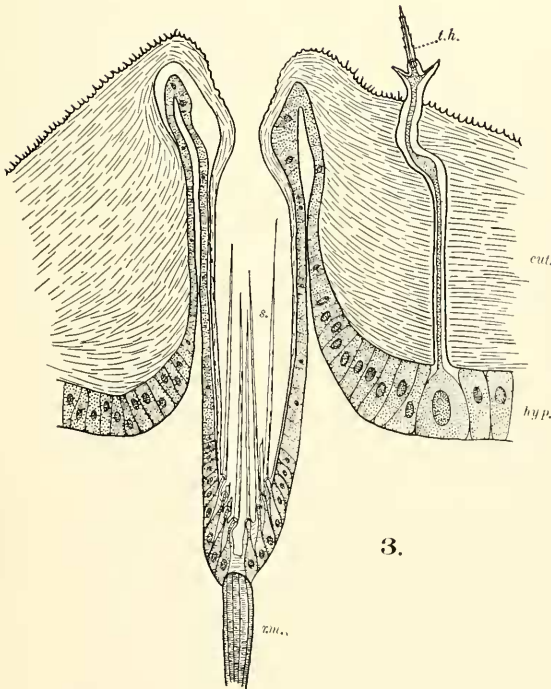
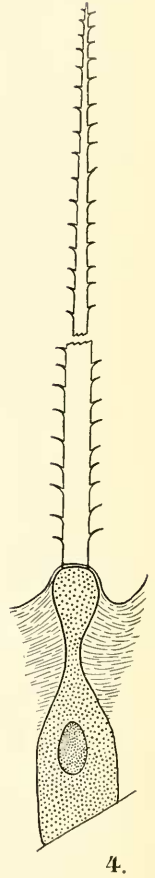
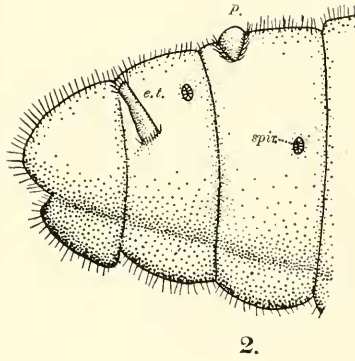
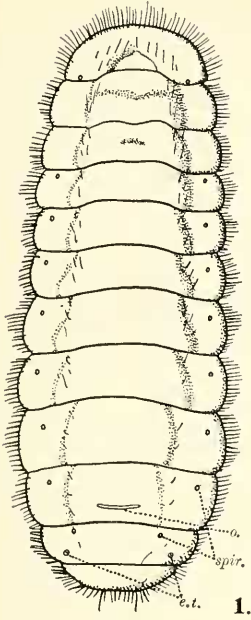
(WITH PLATE IV.)

There have been three species referred to the genus *Cladura* Osten Sacken: *C. flavoferruginea* O. S. (1859), *C. indivisa* O. S. (1861), and a species which Loew called *fuscula* (1873).<sup>2</sup> Osten Sacken asserts,<sup>3</sup> however, that the latter is not a *Cladura* but possibly a

<sup>1</sup> Contribution from the Entomological Laboratory of Cornell University.

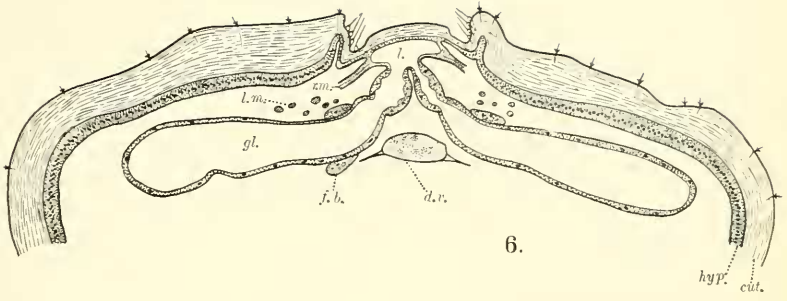
<sup>2</sup> Loew, H., *Beschreibung Europäischer Dipteren*, v. 3, pp. 64-67.

<sup>3</sup> Oster Sacken, C. R., *Studies on Tipulidæ*, Berl. Ent. Zeitsch., Bd. 30, 1886, Heft 2, pp. 205, 206.

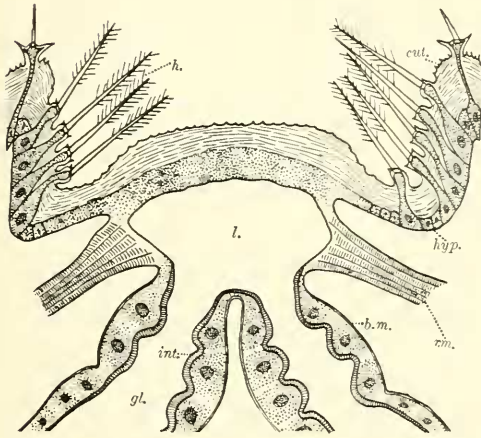


Lycænid Caterpillars.

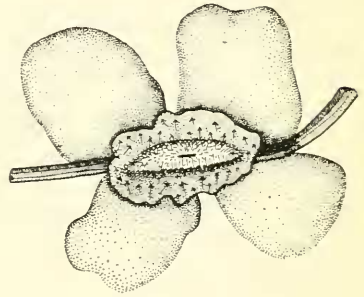




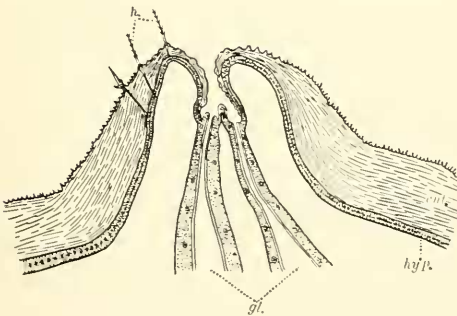
6.



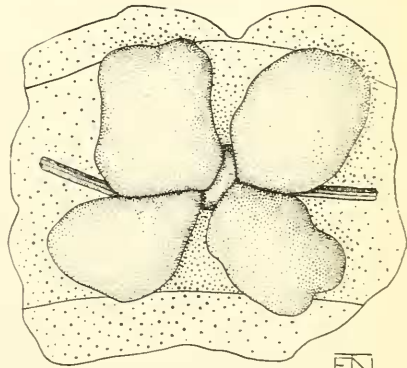
7.



9.



8.



10.



Lycænid Caterpillars.

